



# CAL FIRE

## Sonoma-Lake-Napa Unit

Ben Nicholls

Pre-Fire Division Chief

Vegetation Management Program

# The fire problem

- 2017 set the record for both the Most Destructive and Largest Wildfires in State History.
- **2018 Most Destructive Fire Season in State History**
  - Over **7,600** wildfires
  - **1,846,445** Acres burned
  - Over **22,700** structures destroyed
  - Deadliest fire **88** civilian fatalities

# Vegetation Management Support

- Senate Bill 901
- Senate Bill 1260
- Executive Order N-05-19

# Senate Bill 901

- Highlights:
- \$1 Billion over the next 5 years allocated for fuels treatment
  - Each year:
    - \$135 million to California Climate Investments Grants
    - \$35 million to CAL FIRE for Fuel Reduction work

# Senate Bill 1260

- Highlights:
- Develop a training curriculum for firefighters to become more proficient in prescribed fire
- Accelerate the pace and scale of pre-fire treatments, such as prescribed fire

# Executive Order N-05-19

- CAL FIRE to make recommendations on administrative, regulatory, and policy changes or waivers the Governor can initiate to prevent and mitigate wildfires.
- CAL FIRE to lead stakeholder engagement to inform the report.
- Recommendations for immediate, medium-term, and long-term recommended actions that will have the greatest impact in preventing the impact of destructive, deadly wildfires.

# Impediments to Progress

- Mandated Environmental / Cultural review process
  - California Environmental Quality Act
  - Archaeology
- Public fear of wildfire and or lack of understanding
- Resources to facilitate Fuels Treatments

# How do we change the trend?

- Sonoma-Lake-Napa Unit has been proactively looking at where we can make a difference.



emap | Analysis

Save ▾

Share

Print ▾

Directions

Measure

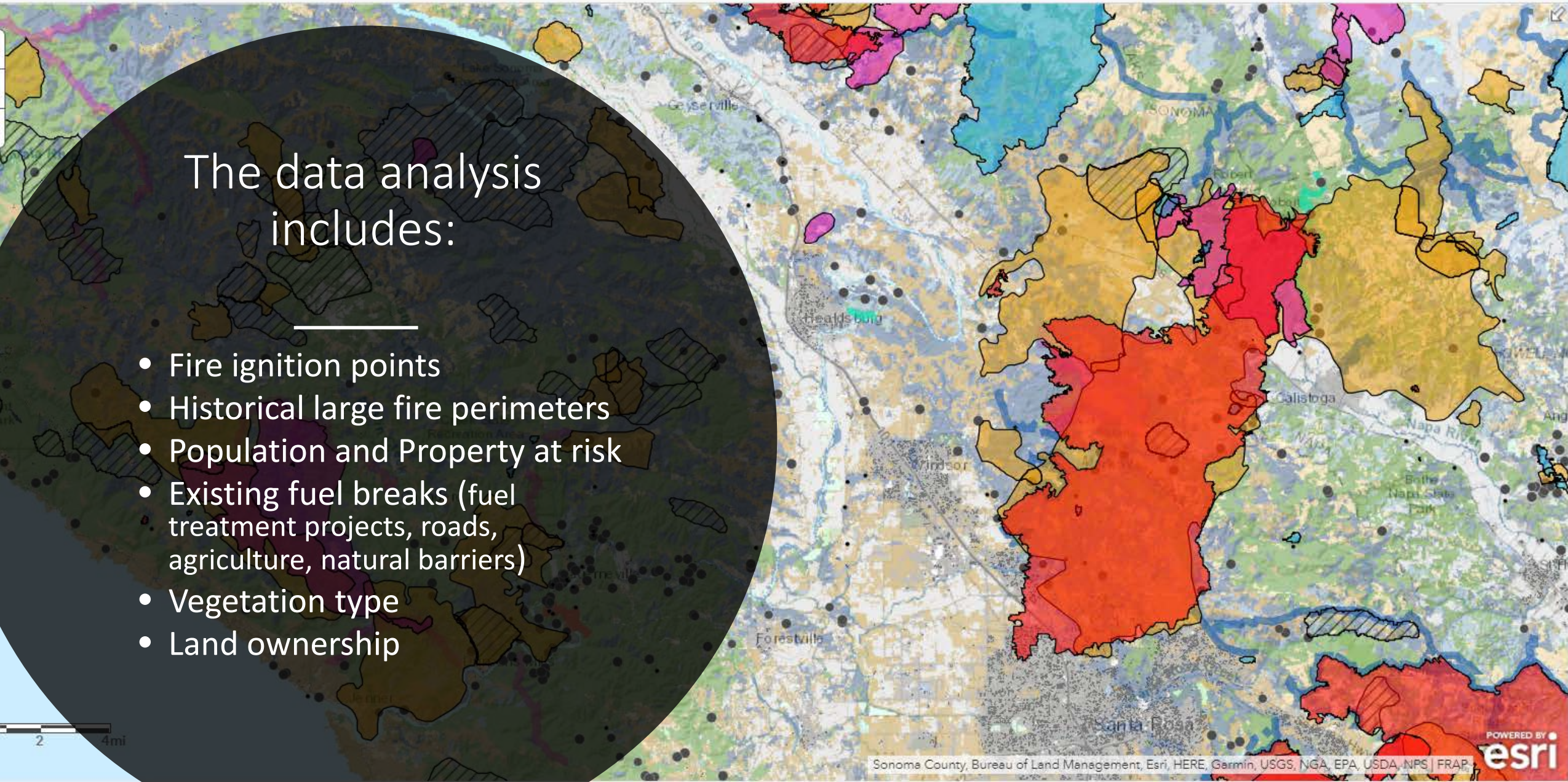
Bookmarks

Find address or place



## The data analysis includes:

- Fire ignition points
- Historical large fire perimeters
- Population and Property at risk
- Existing fuel breaks (fuel treatment projects, roads, agriculture, natural barriers)
- Vegetation type
- Land ownership



# Community Collaboration

- CAL FIRE needs your help to:
- Generate community awareness and support for community level fuels treatment projects.
- Ongoing investment in fuels reduction activities.
- Neighbors helping neighbors.

# Resources

- <http://fire.ca.gov/>
  - <http://www.fire.ca.gov/grants/grants>
  - [www.readyforwildfire.org](http://www.readyforwildfire.org)
- <https://leginfo.legislature.ca.gov/>
- <http://www.cafiresci.org/>
- <http://www.norcalrxfirecouncil.org/>
- <https://www.facebook.com/Good-Fire-Alliance-186216225593746/>
- [Ben.nicholls@fire.ca.gov](mailto:Ben.nicholls@fire.ca.gov)
- (707) 967-1408