



Jenner Headlands Shaded Fuel Break

Brook Edwards
Sonoma Coast Regional Director
The Wildlands Conservancy

Funders:

- Moore Foundation
- NRCS
- CCC
- Cal Fire

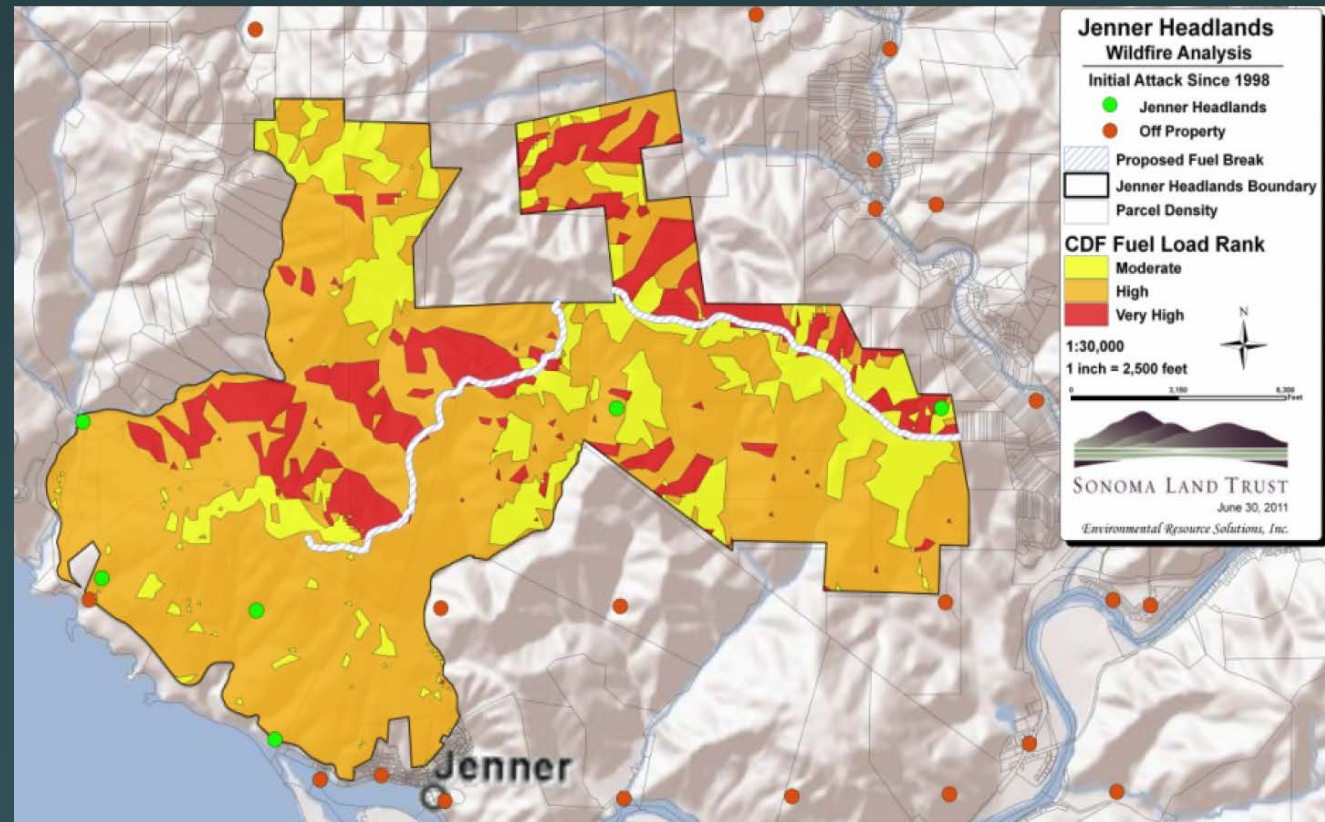


Shaded Fuel Break: Planning



Data

- Cal Fire FRAP data: fuel loading, ignition sources, and past fires
- Topography, road system

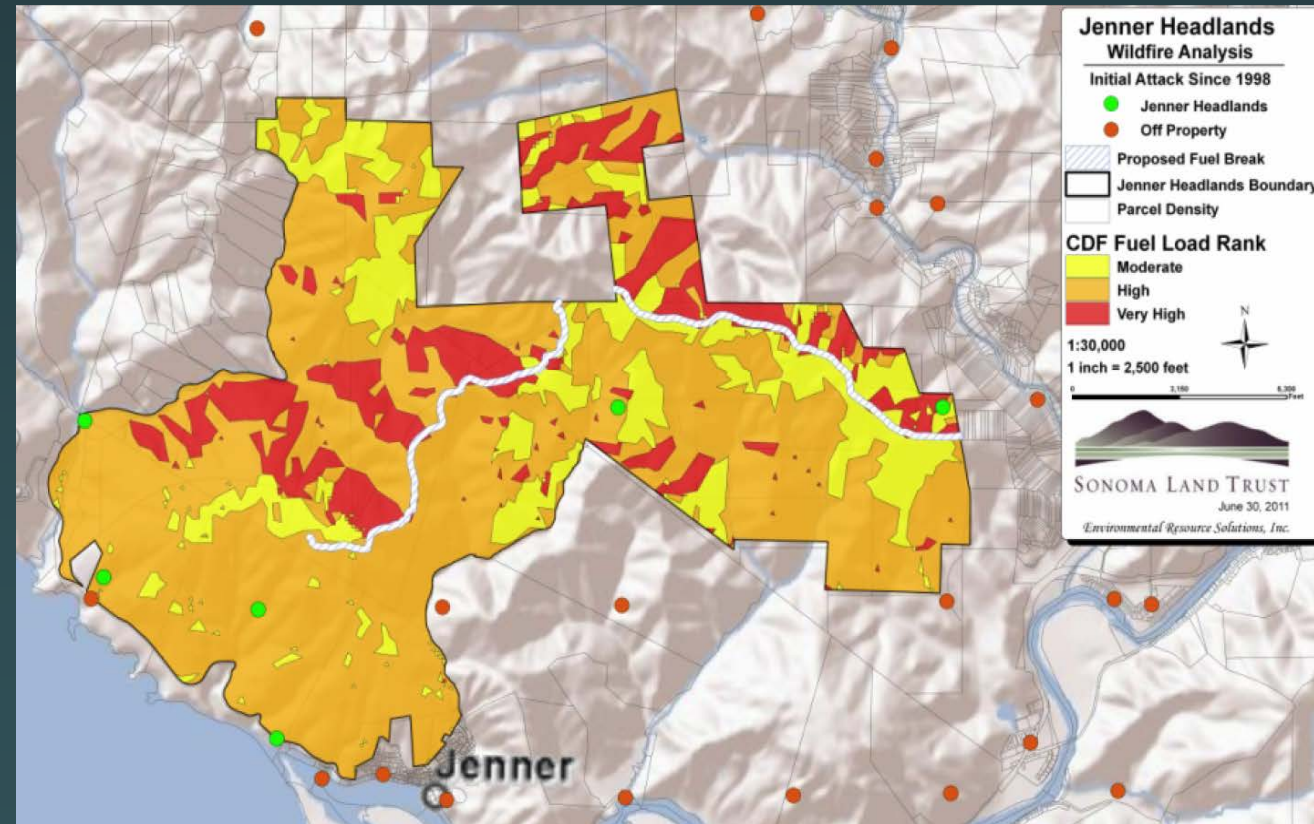


Shaded Fuel Break: Planning



Goals

- Reduce fuel loads 150' either side of ridgetop roads
- Keep large healthy trees
- Remove ladder fuels
- Remove smaller trees
- Remove ground fuel



Shaded Fuel Break Pilot Project: 2013

20 acres, 3 treatment types

- Mastication: \$2,500-\$2,700 ac
- Lop and scatter: \$1,200-\$1,400 ac
- Chipping: \$5,000 ac



Shaded Fuel Break Pilot Project: 2013

Results

- Reduced stems per acre from 1816 to 420
- Basal area reduced from 286 sq ft/ac to 205 sq/ft ac



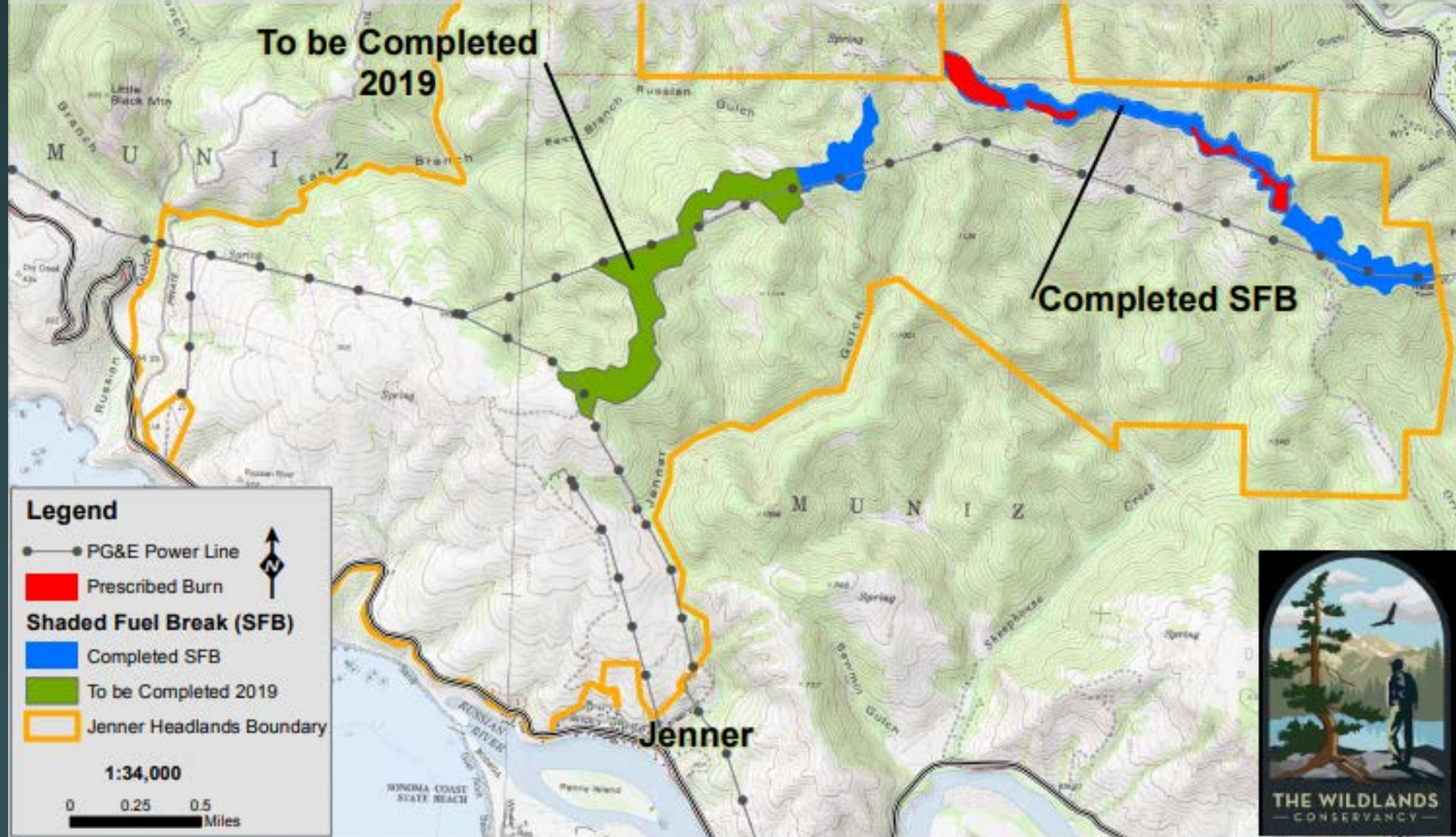
Cal Fire: Prescribed Fire

- Cal Fire prepared a Vegetation Management Plan (VMP)
- Applied prescribed fire to date: 40 acres within established fuel break



Shaded Fuel Break Network

Completed 130 acres, remaining 90 acres to be completed summer 2019



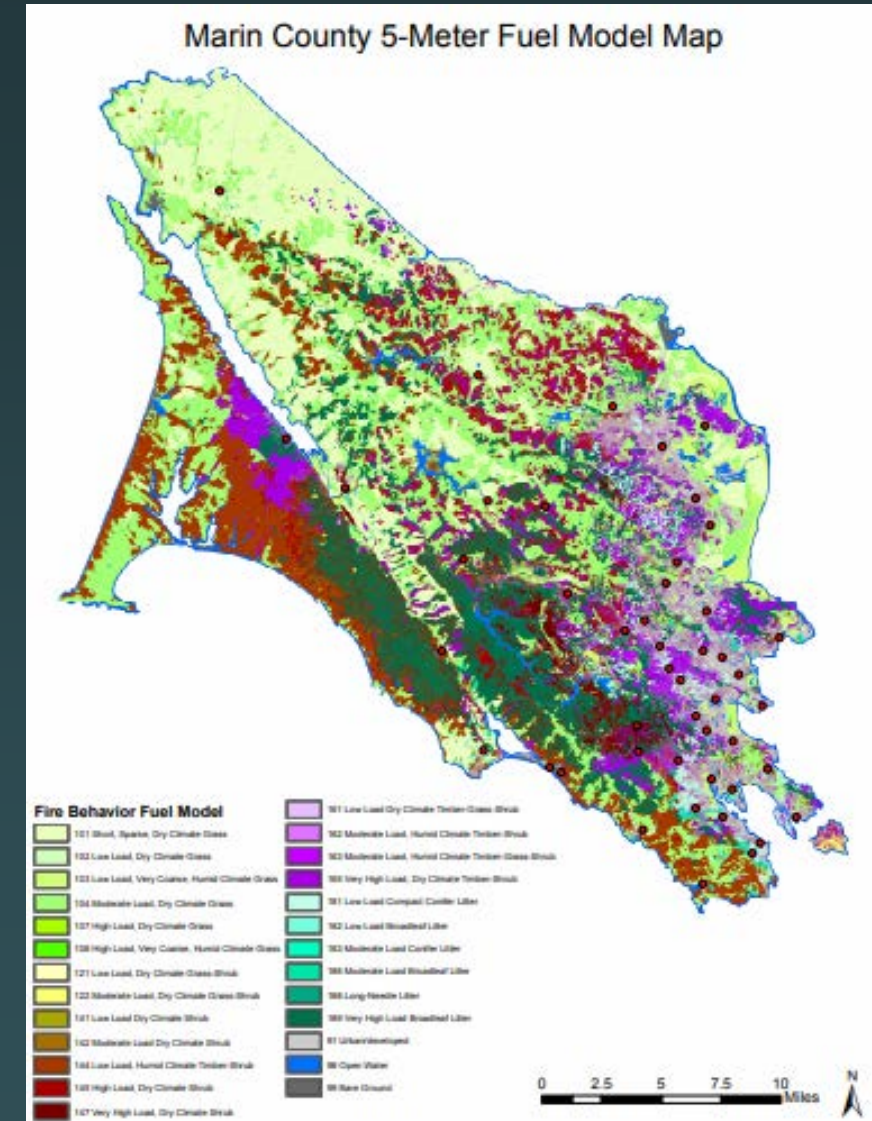
Shaded Fuel Break Workshop Series

- Public and Private landowners
- Representatives from Cal Fire, NRCS, RCD
- Provide land managers with information to plan and implement, and network with funding sources



Elements to Progress County-wide

- Develop fine scale fuel model map for entire county, similar to Marin County
 - This will facilitate:
 - Strategic placement of fuel reduction projects
 - Public/private collaboration to work across property boundaries and develop a continuous network of fuel reduction projects
 - Wise use of fuel reduction funding
- Develop equipment sharing co-op to reduce costs for organizations that have staff/volunteers to carry out fuel reduction work





Brook Edwards

Sonoma Coast Regional Director

brook.e@twc-ca.org

707-696-3263

www.wildlandsconservancy.org