



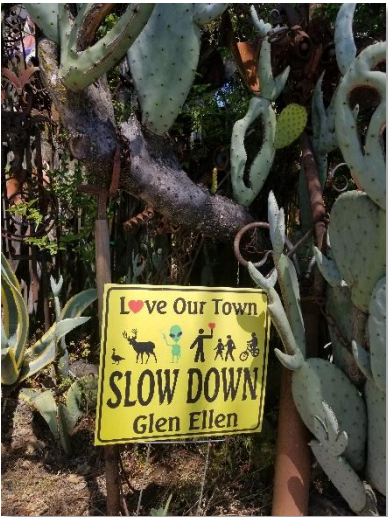
First District Municipal Advisory Council

Community Meeting #1

June 18, 2019



Eldridge | Glen Ellen | Kenwood

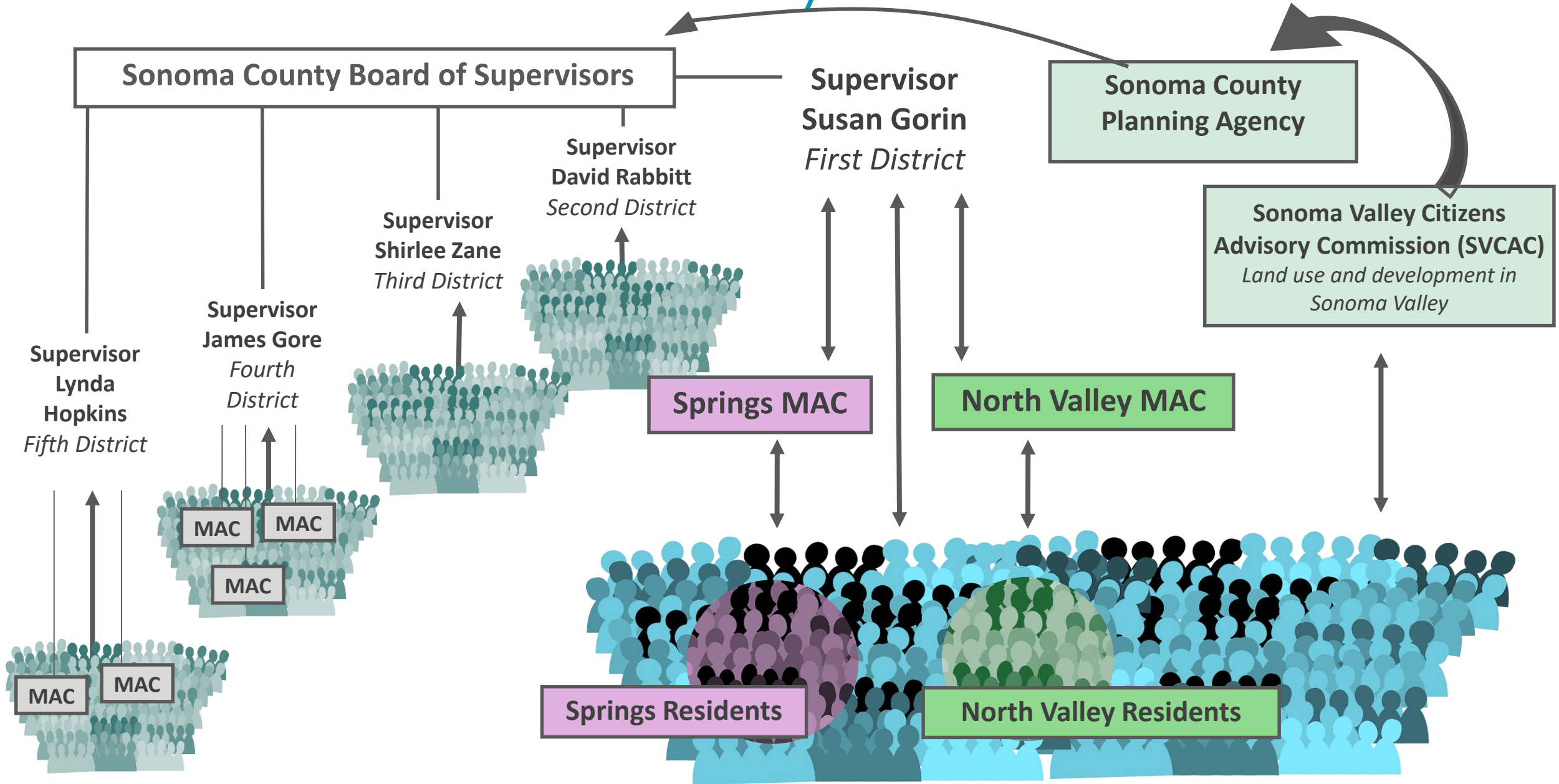


Discussion Topics

- MAC Role
- MAC Scope
- Duties
- Membership/Structure
- Meeting Principles
- Draft Timeline
- Boundaries and Names Exercise



MACs in Sonoma County



Glen Ellen Forum

- Created by the community of Glen Ellen
- Members volunteer to participate
- No rules or regulations around meetings—members decide when and how to meet

& “North Valley MAC”

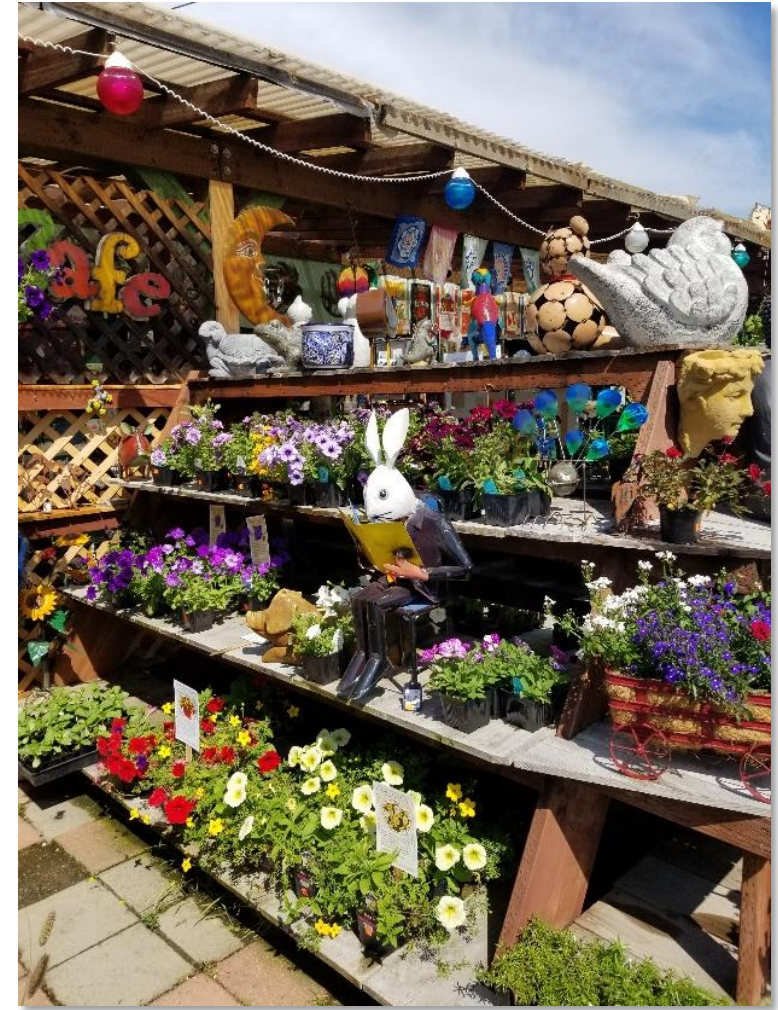
- Created by the Board of Supervisors
- Members apply and are appointed by the Board of Supervisors
- Subject to rules governing meetings—Brown Act, noticing, quorum, etc.



Role of the MAC

Act as a two-way communication channel between the community and the Board of Supervisors

Identify challenges and opportunities, and innovate solutions with the Supervisor



Scope of the MAC

The MAC may make recommendations on municipal services and community needs:

- **Law enforcement** and **fire** services
- **Health and human** safety-net services
- Prioritization of transit, cycling, pedestrian, and other **transportation improvements**
- **Economic Development activities** like supporting our local businesses and promoting new business development
- **Other issues** determined by MAC and Supervisor



MAC Duties

- Get to know **all of the communities** included within the MAC boundaries
- **Understand** their priorities, challenges and opportunities
- Get to know the **functions of the County** including resource and service challenges
- **Facilitate information flow** between the communities and the County



Membership and Structure

Seven Members

- Four from the **community as a whole**
- One **representing Schools**
- One **member of the SVCAC**
- One **business owner**

Two Alternates

- Alternates shall **attend meetings**
- Alternates **vote only when a member is absent** or has been recused due to conflict of interest



Meeting Overview and Principles

- Meetings will occur on **a regular schedule at a regular location** agreed to by the MAC
- A quorum is necessary for a meeting to take place—**four voting members** constitutes a quorum
- Meetings must be **publicly noticed** and **allow public participation**
- A quorum of MAC members **cannot “meet” (including digitally)** to hear, discuss or deliberate on anything within their purview without noticing the public
- This might sound limiting or counterintuitive, but...

***The public’s
business must
be done in
public.***



Draft Timeline

Jun/Jul

- Community Meetings
- Boundaries and Name Finalized

Aug/Sep

- Initial Board Approval
- Applications Drafted

Oct/Nov

- Applicant Interviews and Selection
- Board Approval of Appointments

Dec/Jan

- Commissioner Training
- Meetings Begin



Municipal Advisory Council

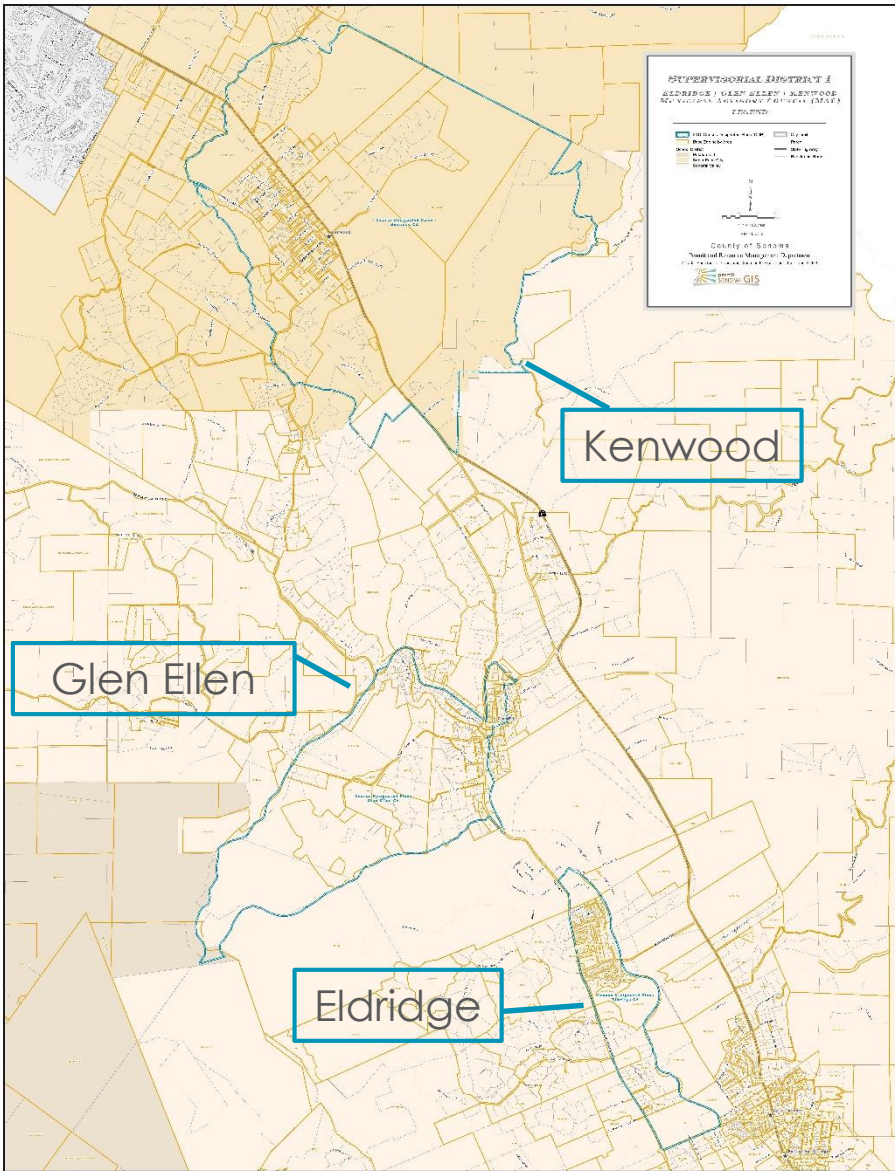
Who's In, Who's Out?

- Eldridge?
- Glen Ellen?
- Kenwood?

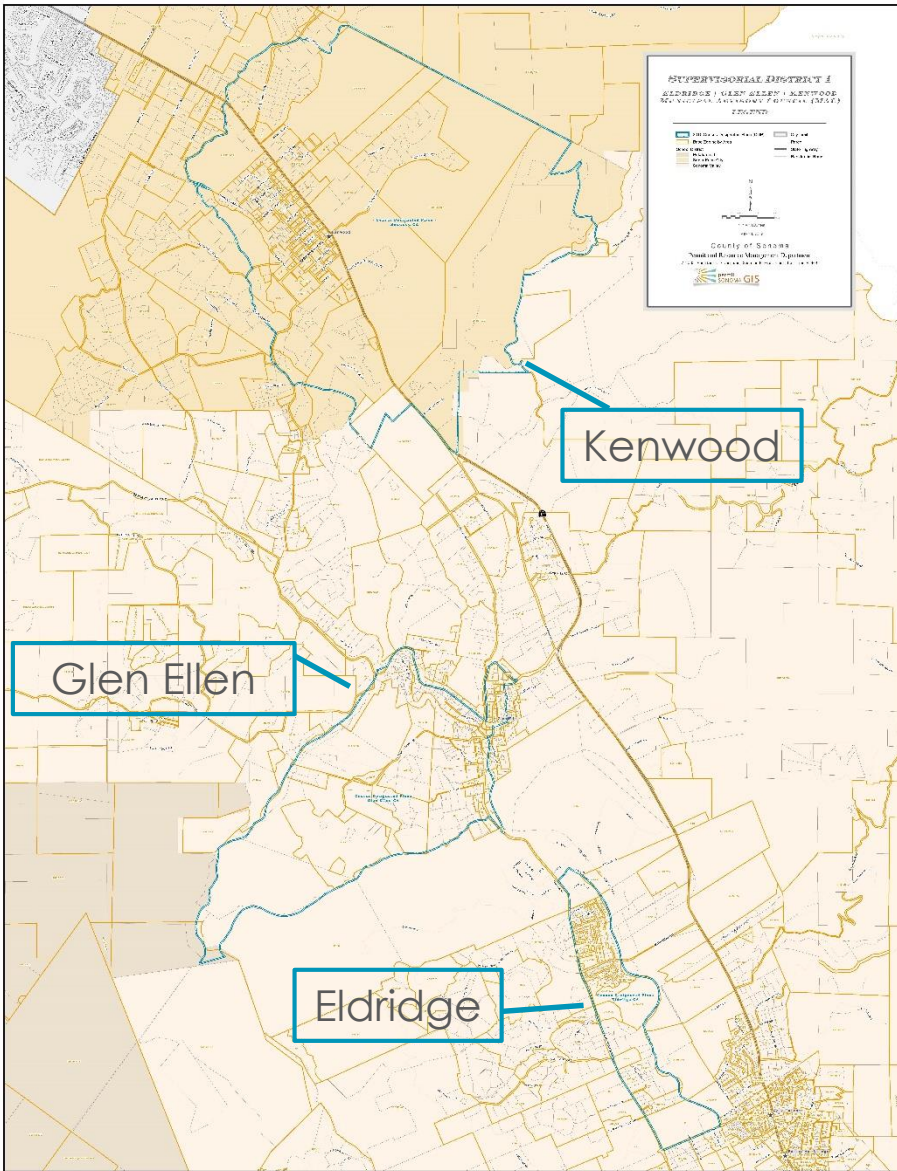
What's in a name?

- “North Valley MAC” is a placeholder name based on the map for the Sonoma Valley Citizen’s Advisory Council. Other suggestions?

➤ Activity: Dot, Boundaries, Scope and Name Exercise



Group Exercises



- **Each person** at the table puts **a yellow dot** where they live Baseline Map (A) if you haven't already.
- Take a moment to look at the large copies of Boundary Maps 1, 2 and 3 (B, C and D). Discuss the boundaries **with your table**. What do you like? What don't you like?
- **Each person** puts **a green dot** on the map they prefer.
 - If you have a different idea about boundaries, please use one of the blank maps on the table to draw your preferred boundary
- Discuss the scope and tasks of this MAC **with your table**. What should the MAC focus on?
- **Any Person** should write any name ideas you may have on the MAC Names sheet.



Thank You & Questions

Supervisor Susan Gorin

susan.gorin@sonoma-county.org

District Director Pat Gilardi, SVCAC Coordinator

pat.gilardi@sonoma-county.org

Field Rep Arielle Kubu-Jones, “North Valley”
MAC Coordinator

arielle.kubu-jones@sonoma-county.org

Field Rep Liz Hamon, Springs MAC Coordinator

liz.hamon@sonoma-county.org

Call the team at 707.565.2241

